



The Cost of Living

Who's Really Hurting?

4 September 2014

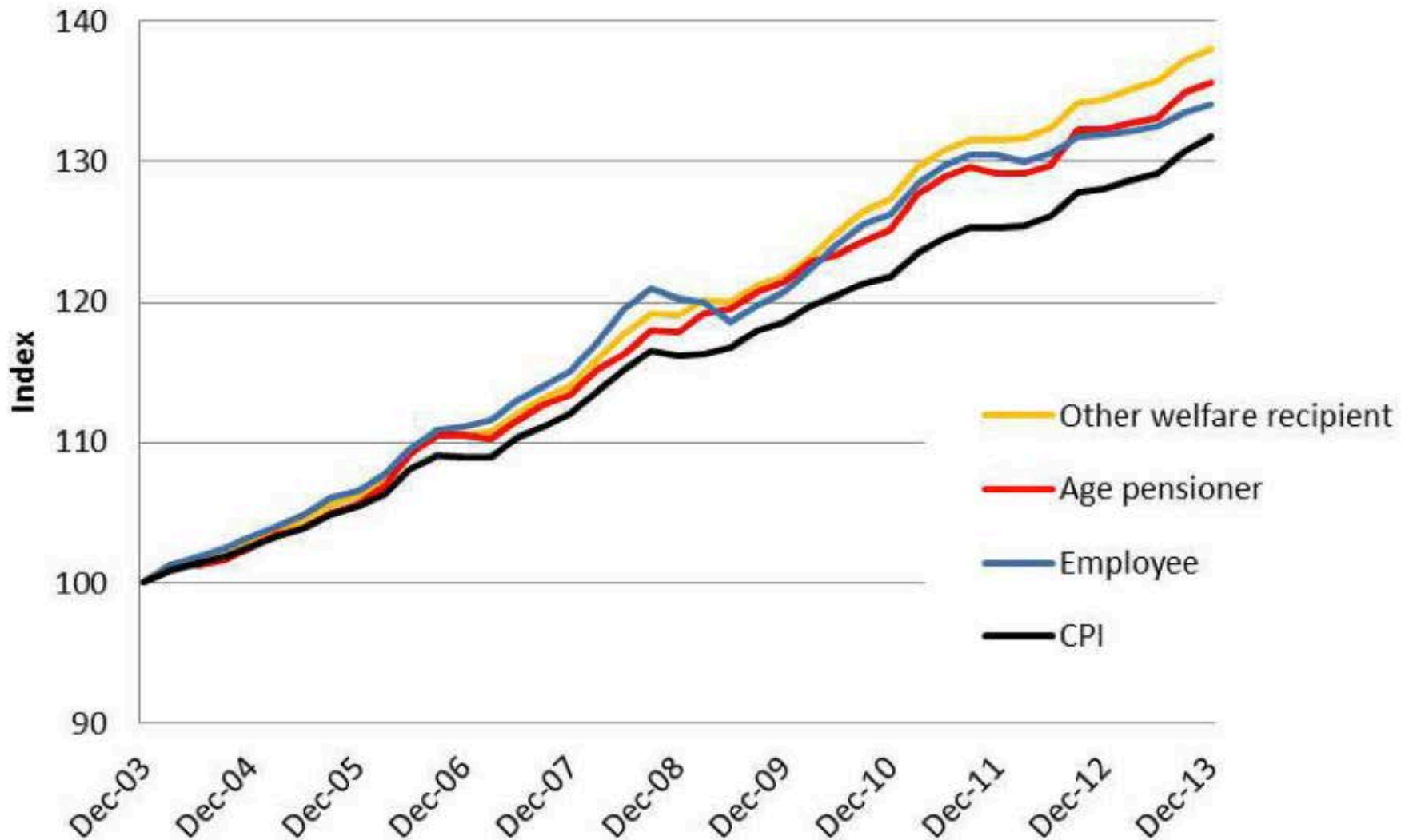
ph: 02 9211 2599
Email: info@ncoss.org.au
Website: www.ncoss.org.au



Overview

- ▶ About NCOSS
- ▶ The cost of living
- ▶ Incomes
- ▶ Concessions

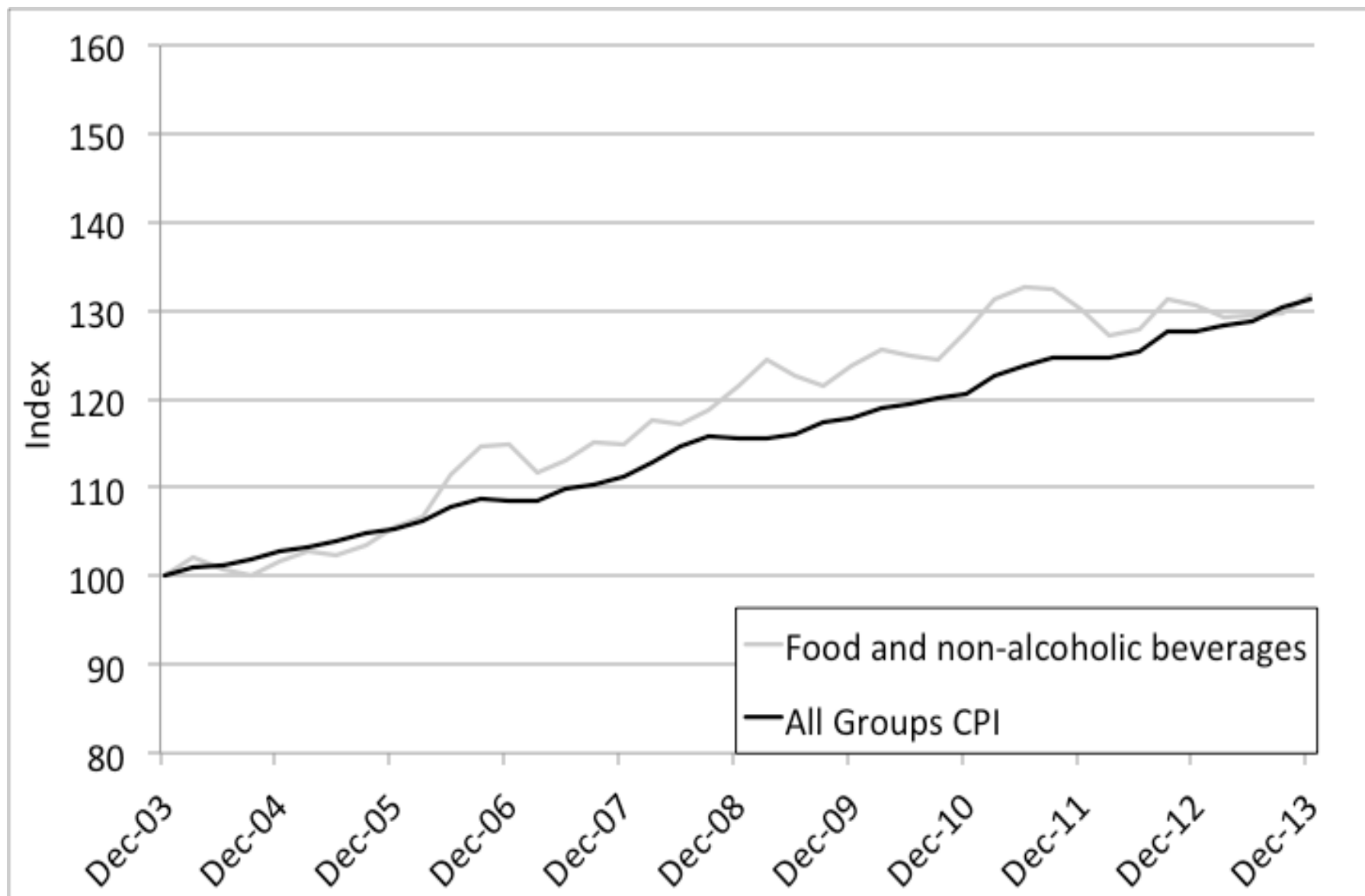
Selected Living Cost Indexes & CPI



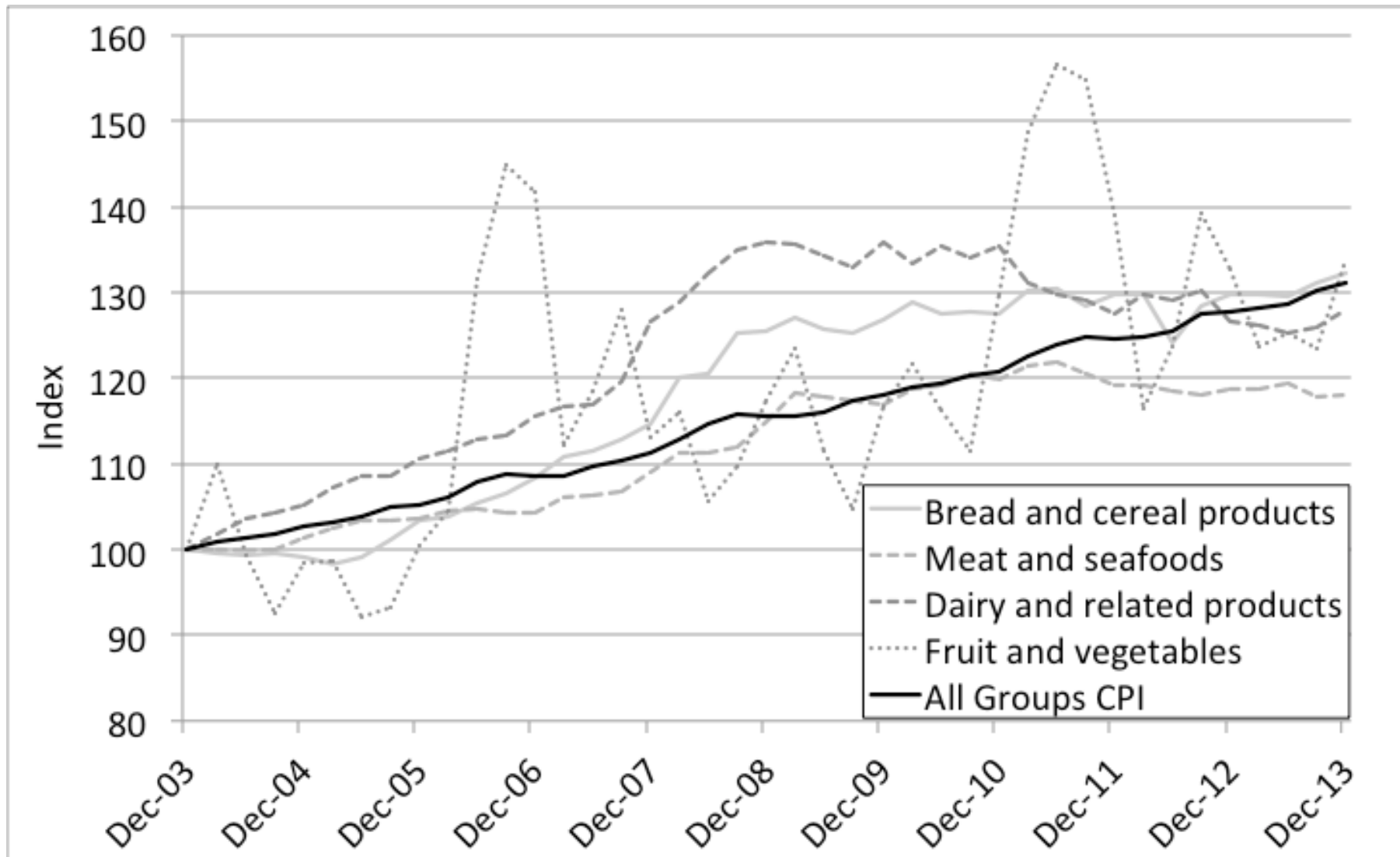
(Source: ABS, 2014a)

Household Expenditure Patterns

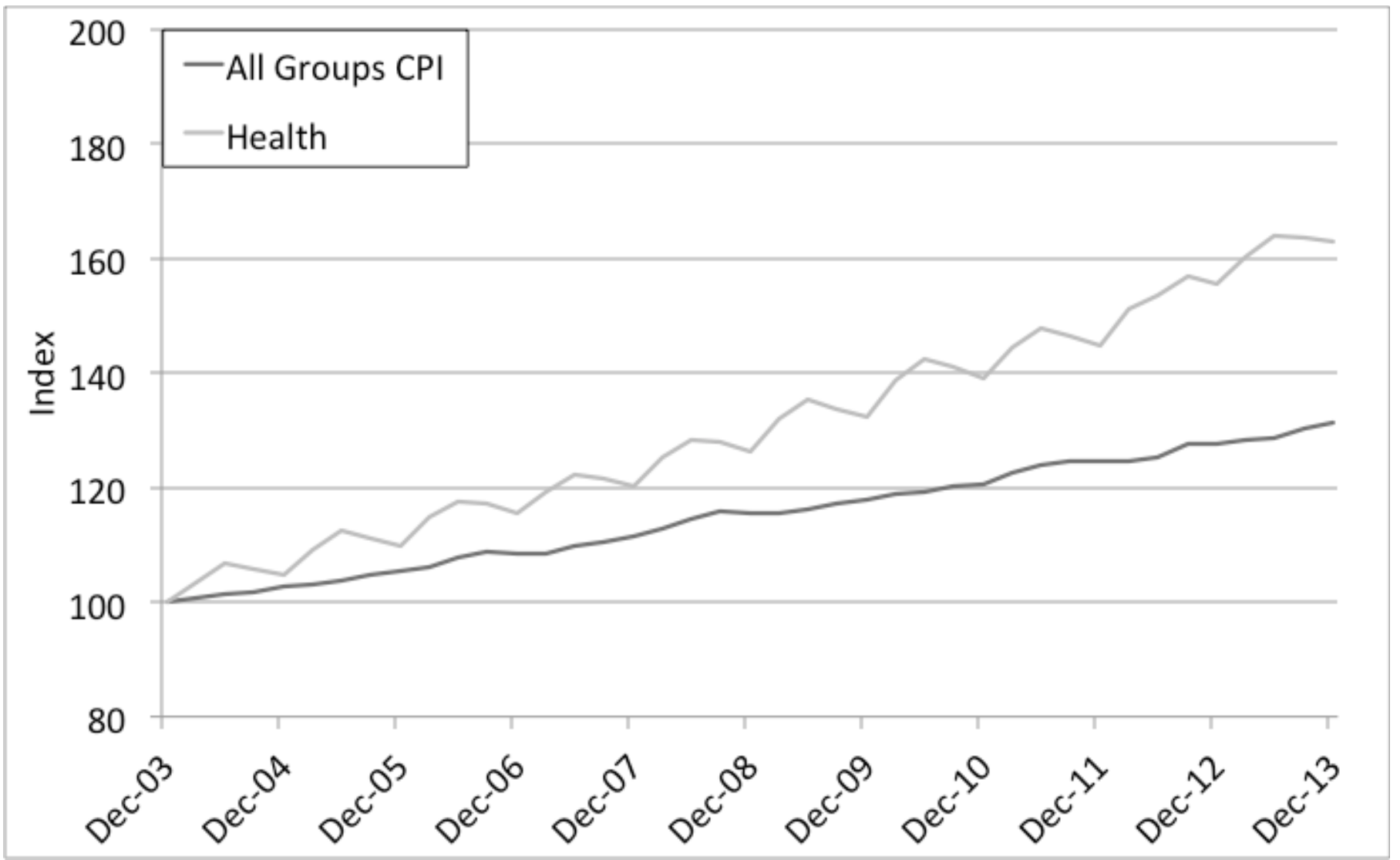
	All households	65+	Receives age Pensions
Housing	18.8	11.2	14
Food	16.8	19	22.2
Transport	15.6	12	11.5
Recreation	12.9	14.9	12.3
Household services and operation	5.6	7	8.1
Household furnishings/equipment	4.2	4.2	5.2
Health	5.1	8.2	8.9
Clothing and footwear	3.6	3	2.7
Alcohol and Tobacco	3.5	3	3.5
Energy	2.5	3.4	4.3
Personal care	2	2.2	2.2
Miscellaneous	9.3	*12.1	5.1
Total	100	100	100



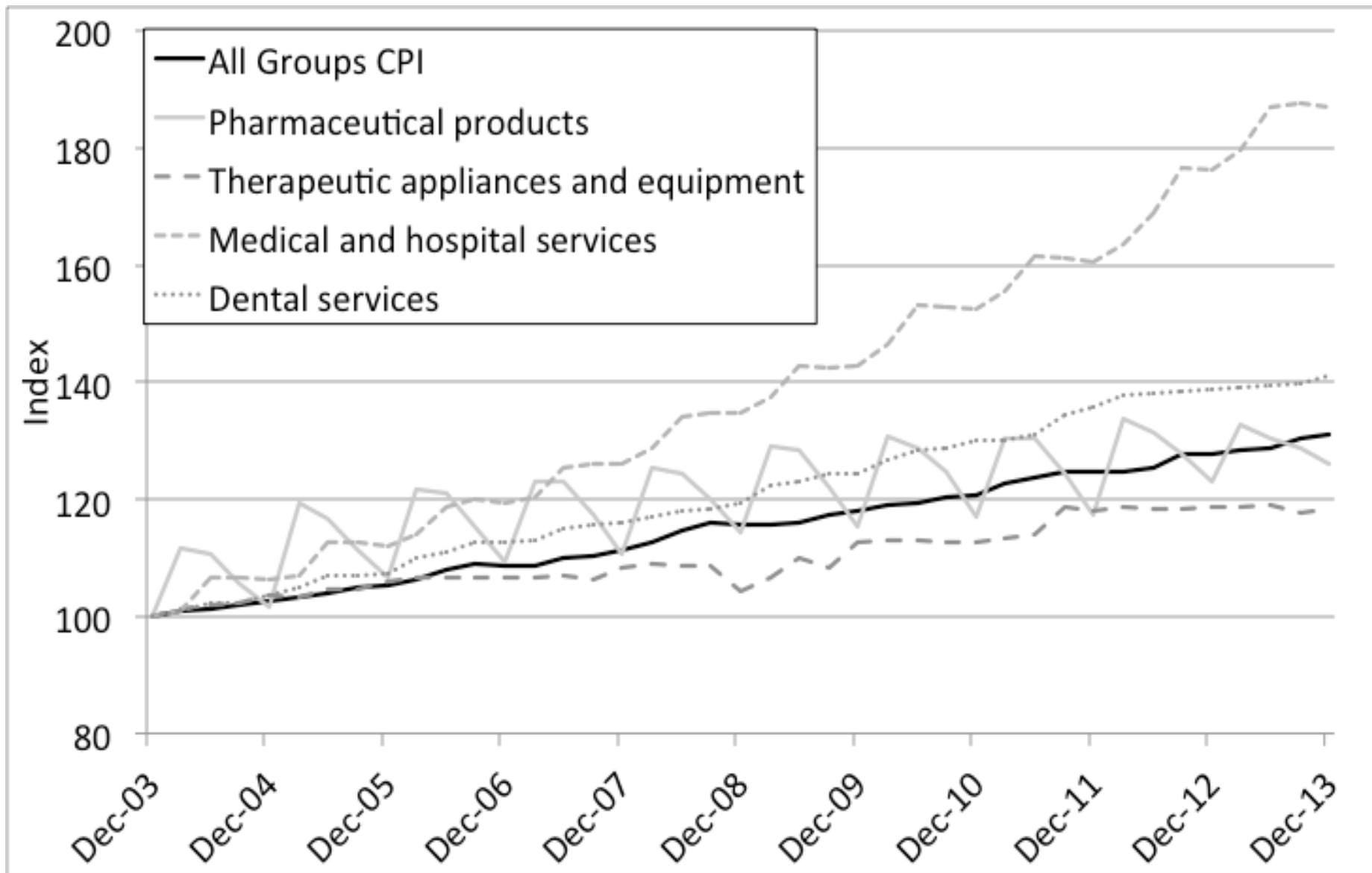
Food



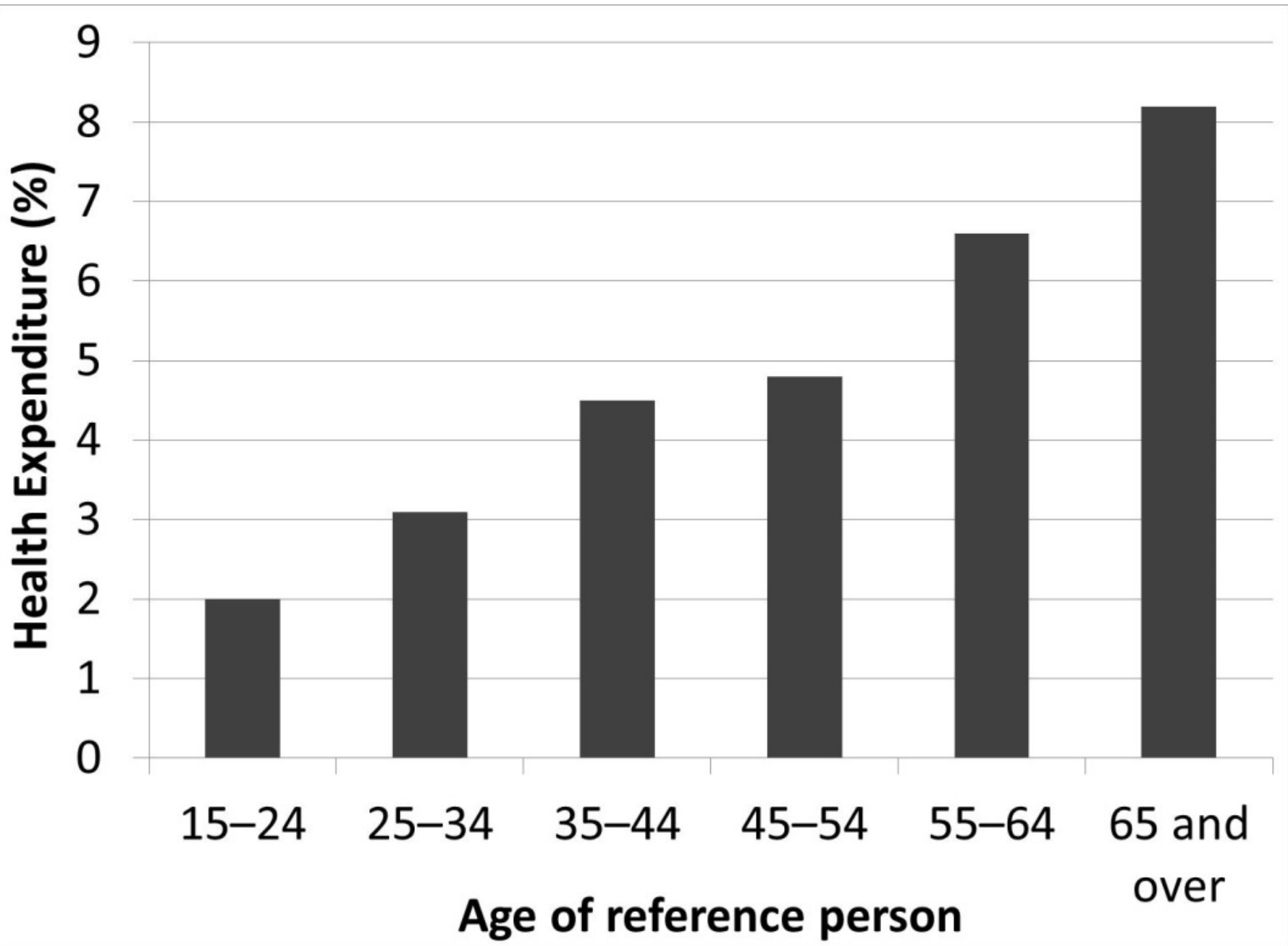
Food

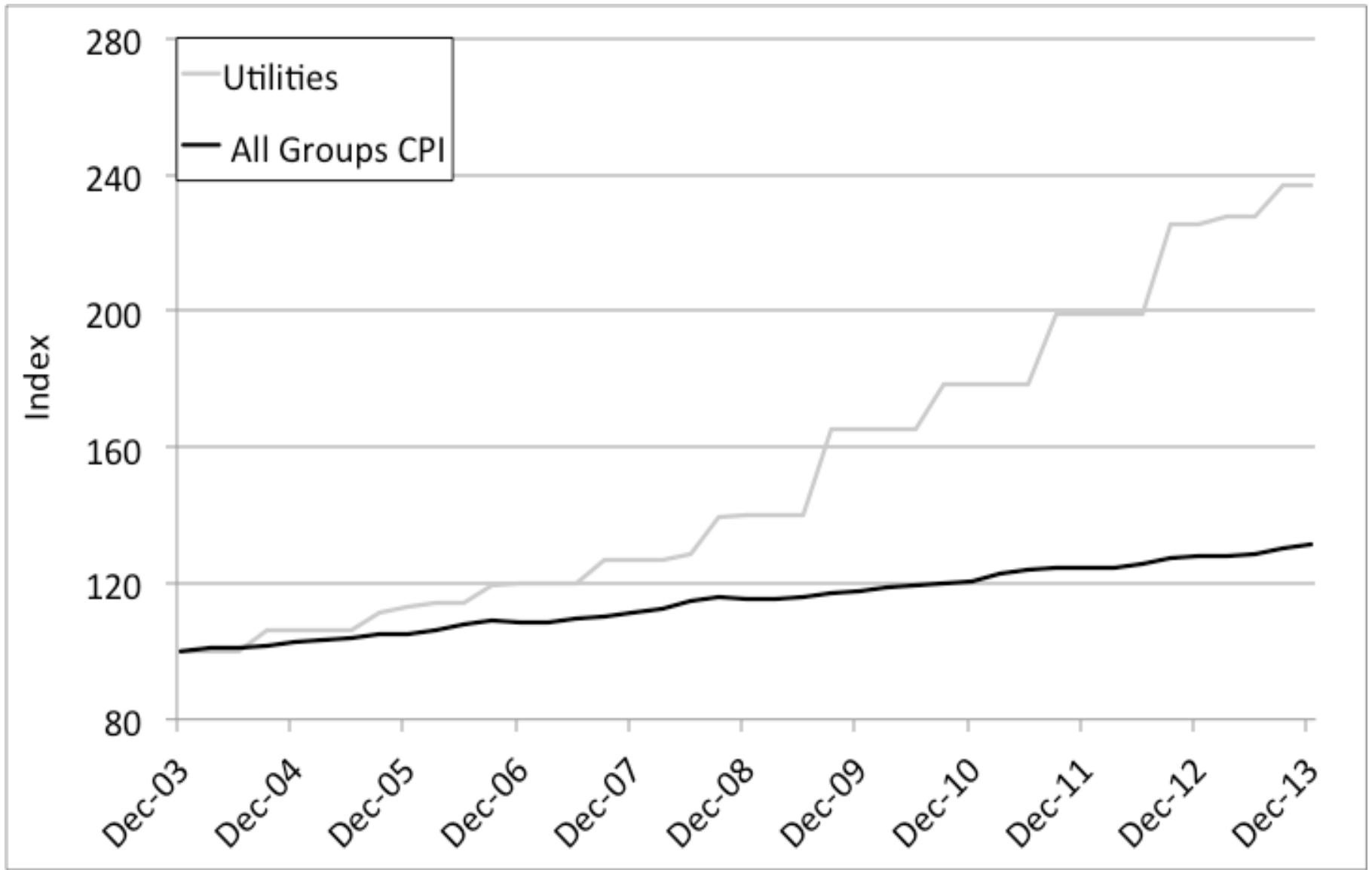


Health



Health





Utilities

Incomes

- ▶ For most people – increases in cost-of-living offset by increases in income
- ▶ Average weekly earnings
- ▶ Welfare payments

Concessions

- ▶ Complement income support

- ▶ BUT:
 - Many not indexed
 - No framework / consistent objectives
 - Outdated

- ▶ Current Situation
 - Federal funding withdrawn
 - 2015 election

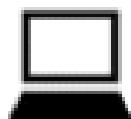
Concessions

- ▶ Energy
- ▶ Water
- ▶ Council Rates
- ▶ Public Transport
- ▶ Vehicle Registration & Licences
- ▶ Taxi Transport Subsidy Scheme
- ▶ School Student Transport Scheme

Join the conversation



www.facebook.com/nswconcessions



www.ncoss.org.au/concessions



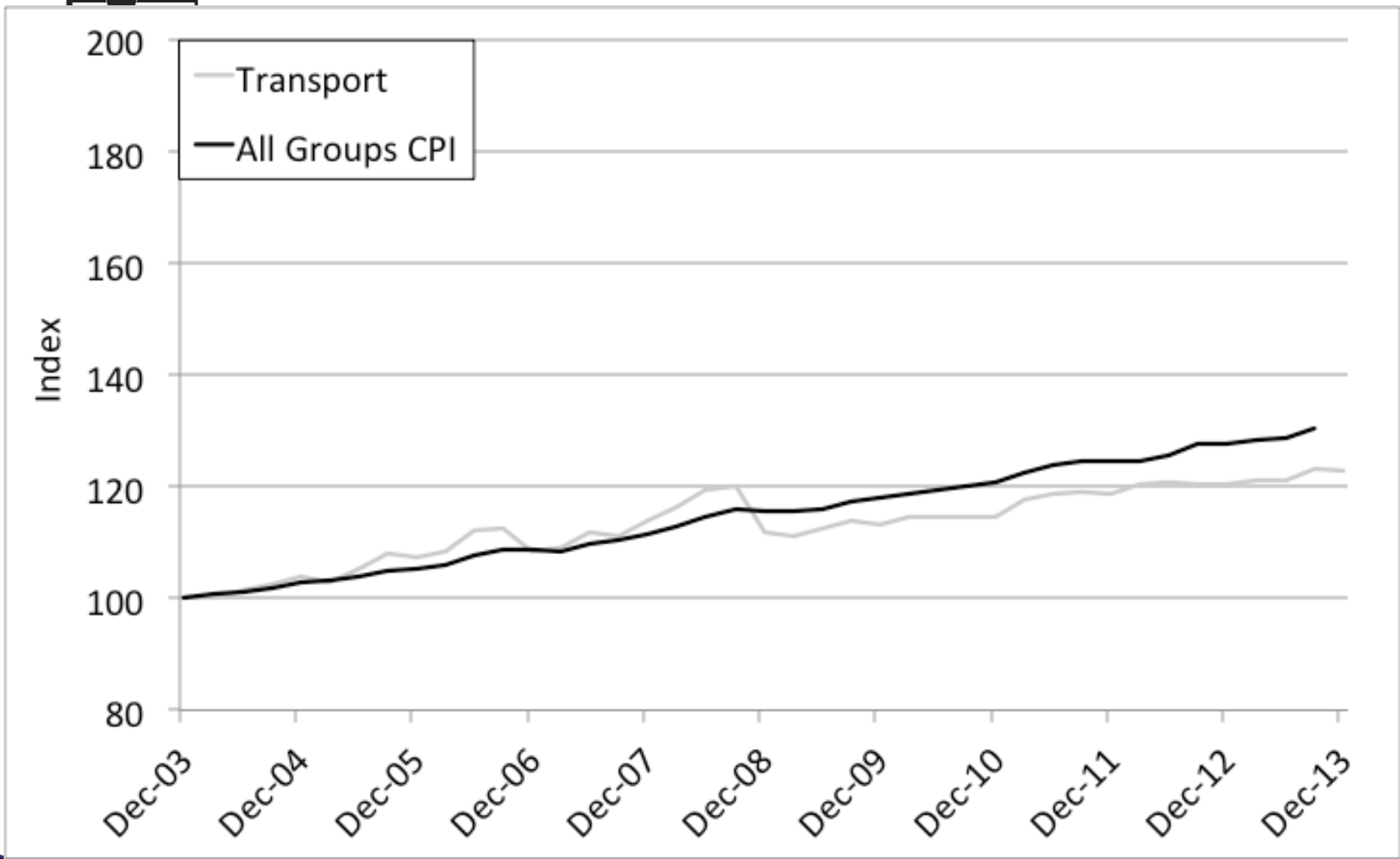
rhiannon@ncoss.org.au



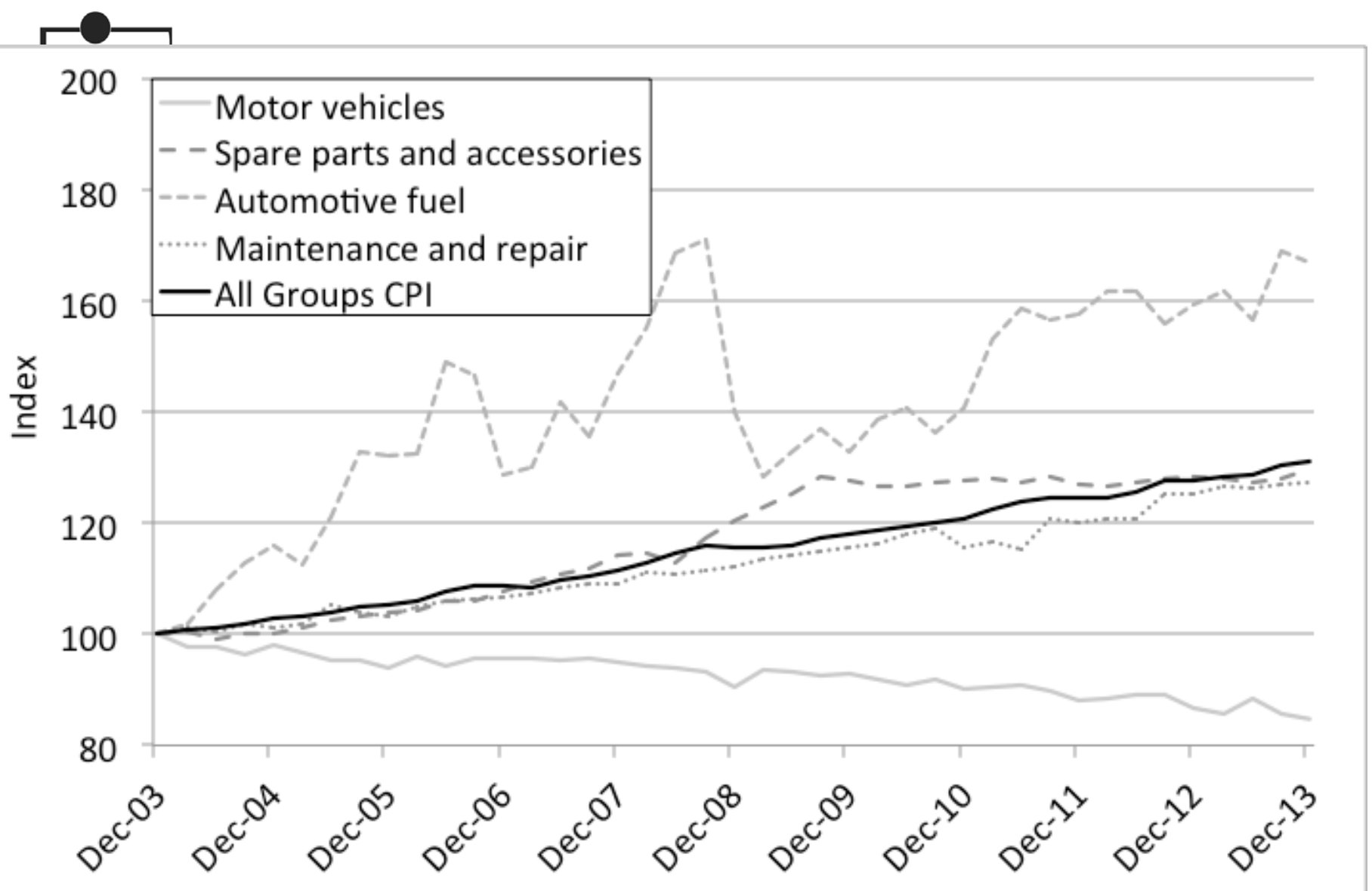
66 Albion St. Surry Hills NSW 2010.



(02) 9211 2599 ext 128



Transport



Transport