



Abuse of Older People Symposium

World Elder Abuse Awareness Day
Thursday 15 June 2006
NSW Police



Analysis of Data relating to Victims of Personal Violence Aged over 60 years

- From the 2001 census, there were 1,095,2003 people aged over 60 years in NSW.
- They comprised 17.2% of the NSW population.
- Those aged over 70 years comprised 9.5%.
- This proportion is expected to increase over the next ten to twenty years with the 'baby boomer' effect, a declining birth-rate and increased life expectancy.



Physical Assault

- Analysis of the assaults reported to NSW Police in the five year period between 2001 and 2005 shows that while the number of assaults reported to Police has risen from 76,000 in 2001 to 80,000 in 2005, the proportion of assaults involving people aged over 60 years has remained the same.

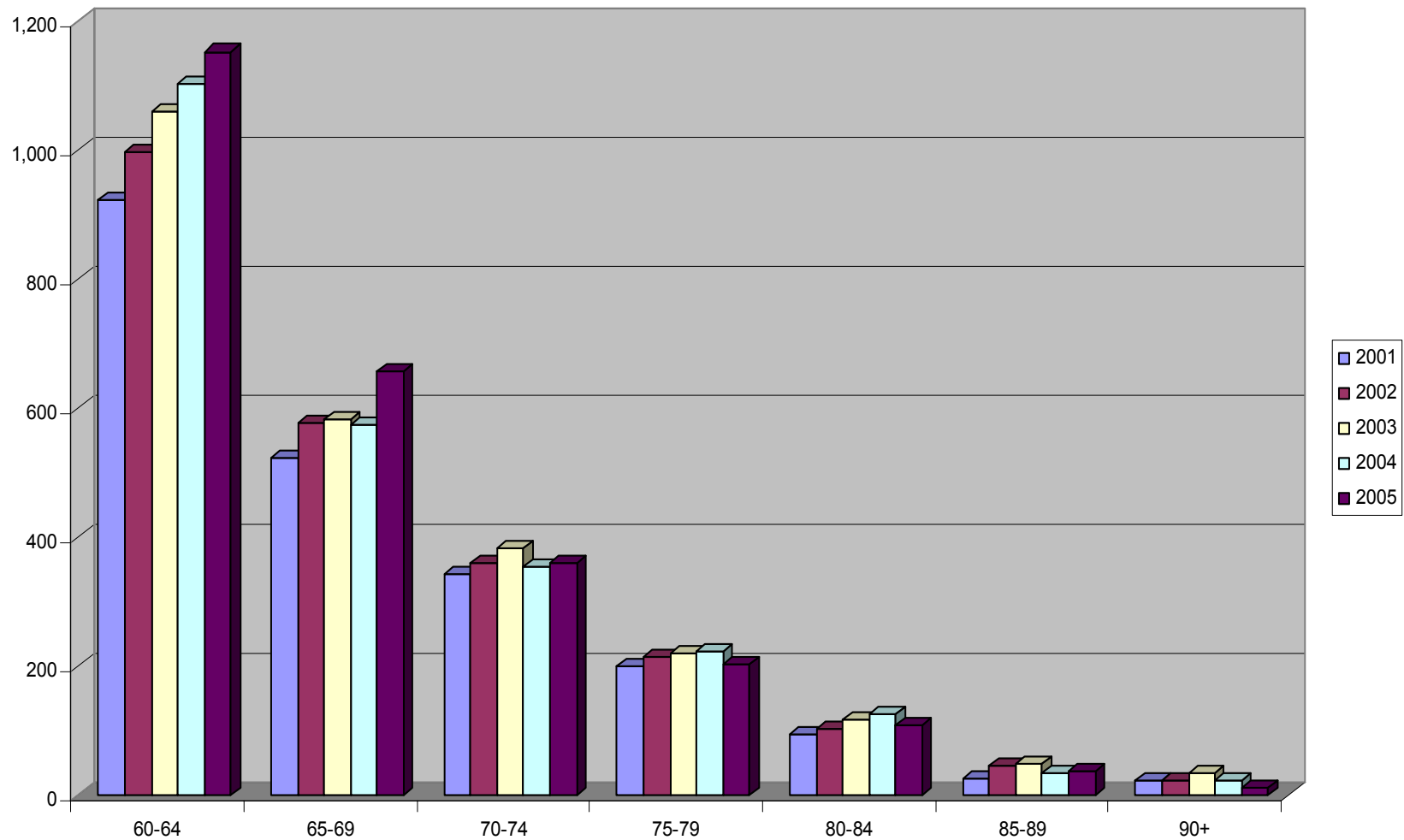


Physical Assault cont..

- Assaults involving victims aged over 60 years comprised 3% of the total reported assaults over these years (2,000 to 2,500 incidents).
- These involving victims aged over 70 years comprised less than 1% of the total reported assaults to NSW Police.
- People aged over 60 years are at a much lower risk of being assaulted than younger people.



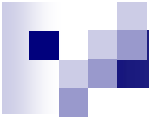
Assaults of Older Victim by Age Group 2001-2005



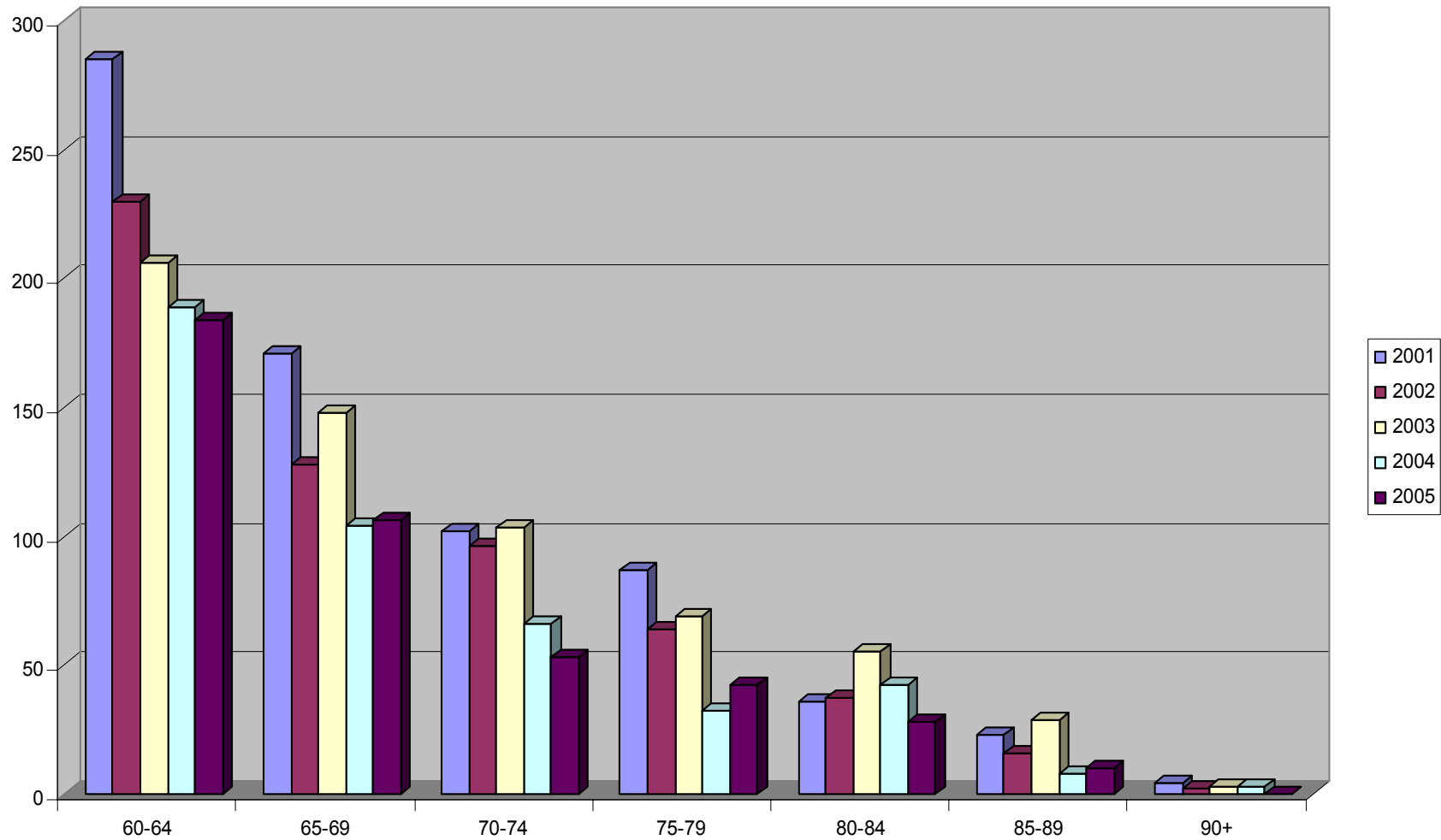


Robbery

- Analysis of the robberies reported to NSW Police 2001-2005 indicate those involving people aged over 60 years comprise just under 4% of incidents.
- The number of robbery incidents involving older victims has declined in robberies overall in NSW over the same period.
- There were just over 400 such incidents reported to Police in 2005.



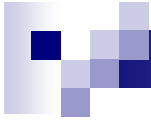
Robbery of Older Victim by Age Group 2001-2005



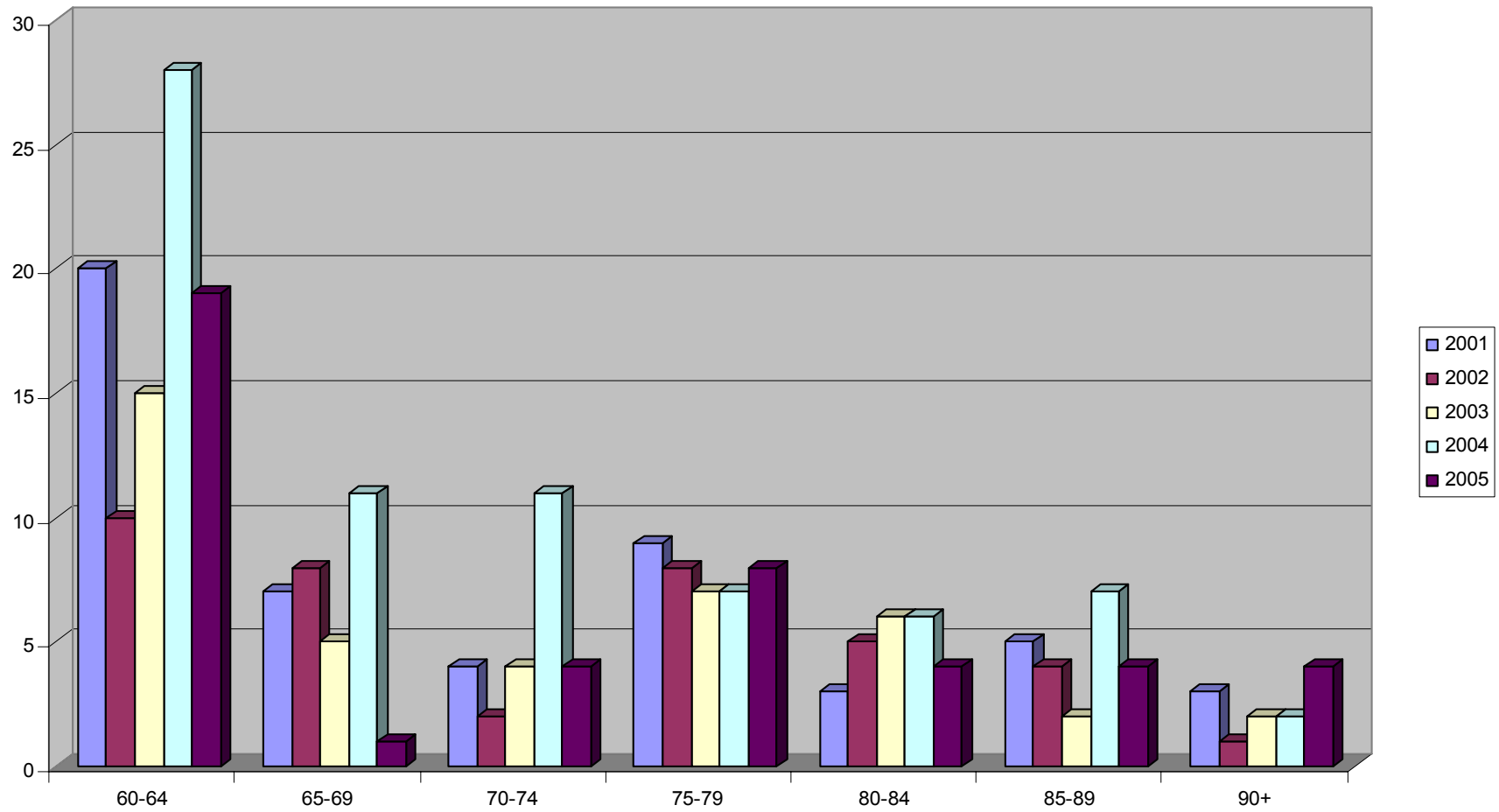


Sexual Assault

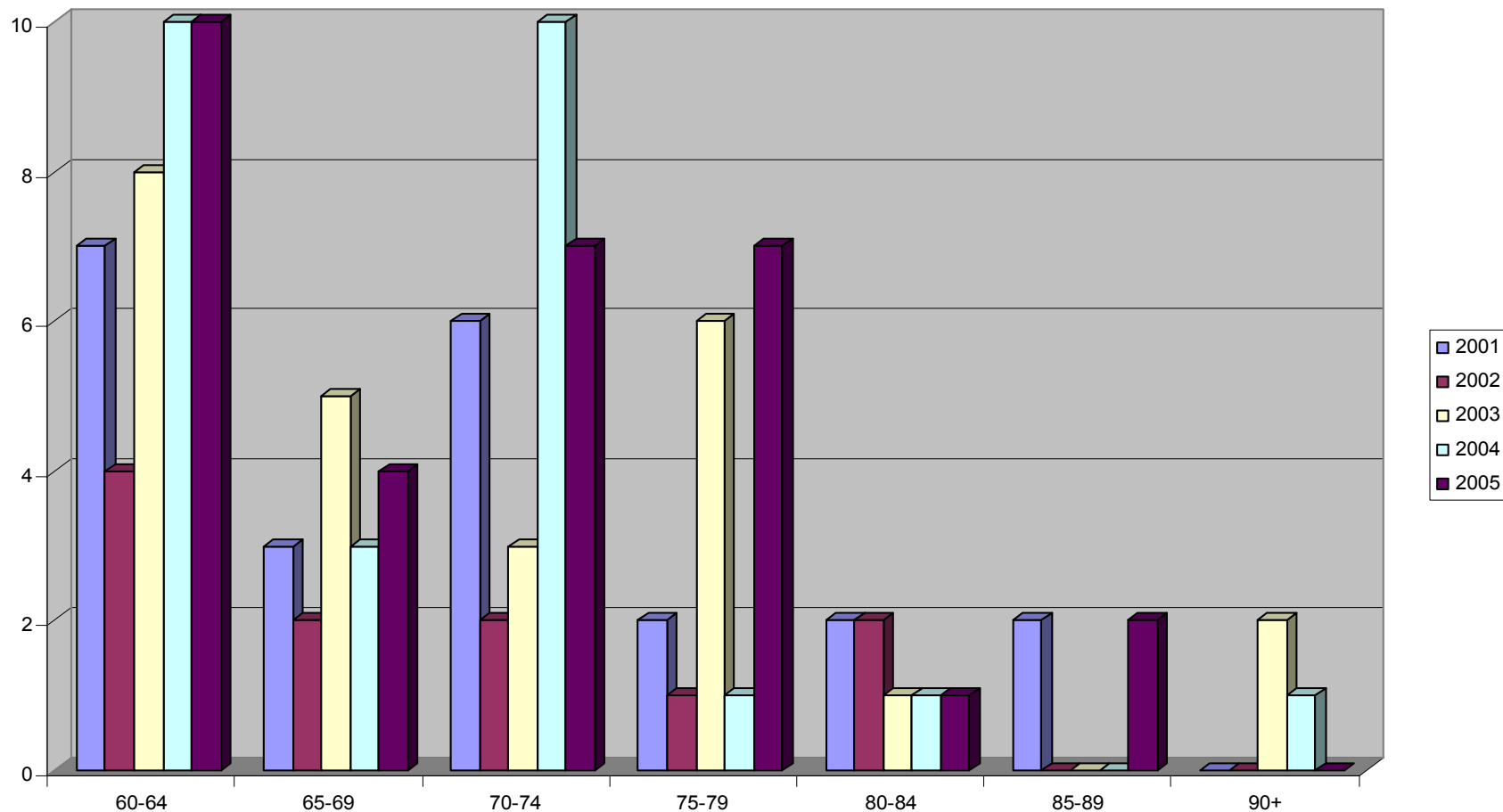
- The number of incidents of sexual assault involving older victims reported to Police is quite low – between 40 and 50 incidents each year (with the exception of 1994 with 72 (the reason for this peak in 2004 is not apparent)).
- These incidents comprise 0.5 to 1% of Sexual Assaults reported to Police between 2001 and 2005.
- Around 30-40% of these incidents involved persons aged 60-64 years.



Sexual Assault of Victims by Age Group 2001-2005



Other Sexual Offences of Older Victim by Age Group 2001-2005





Things to consider in responding to reports of sexual assault

- Welfare of the victim
- Timeframe of assault
- Crime scene
- Medical examination
- Contact Police
- Witnesses
- Safety of other residents
- First complaint
- Contact family



What to expect !

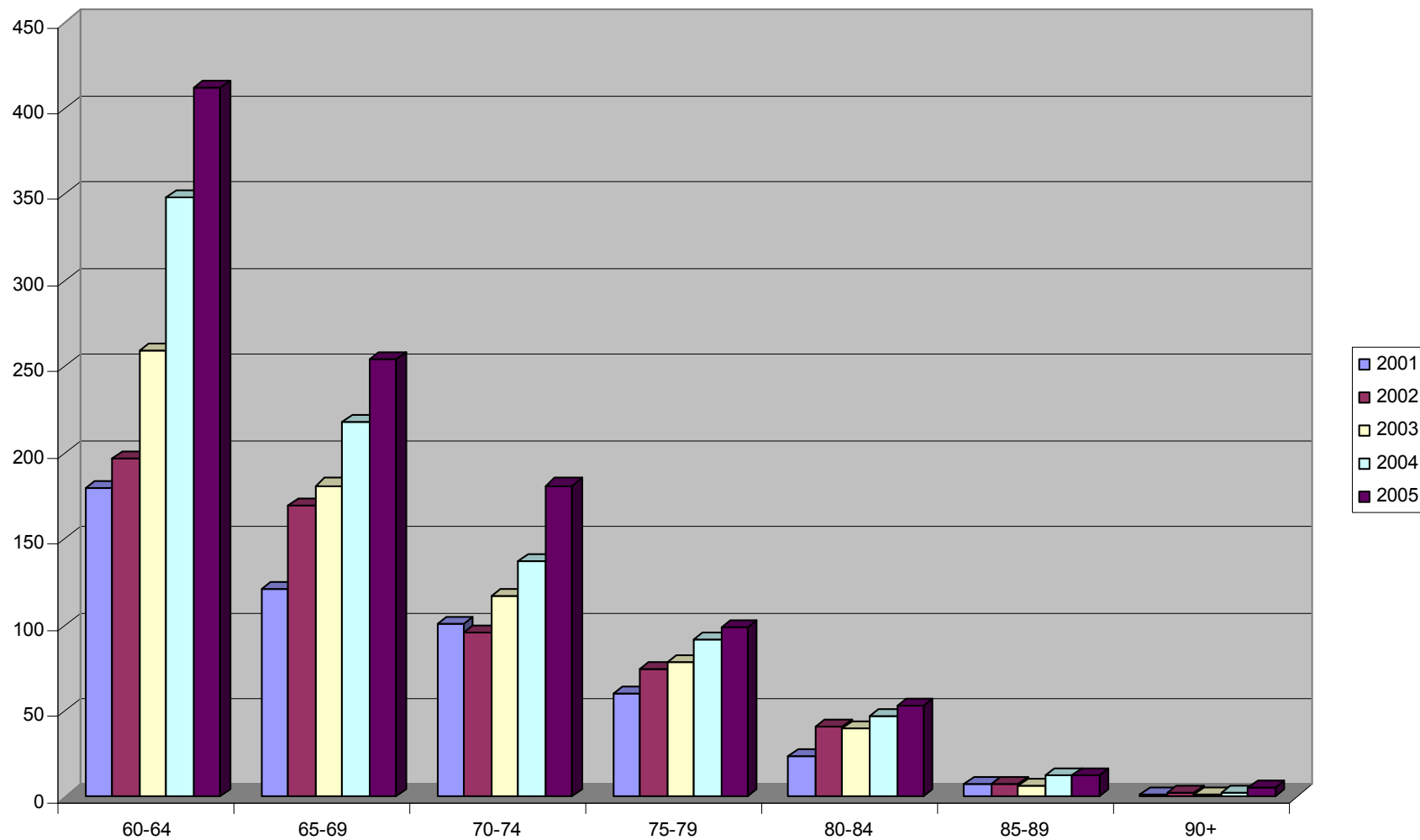
- Attendance of Uniform Police, Detectives and Crime Scene
- Search for offender
- Removal of evidence (Room and clothing)
- Nominate a contact person for the Police
- Sexual Assault examination
- Counselling



Personal Violence

- Older people are considered less likely to be the victim of Personal Violence Offences than are young people.
- They are more likely to report being a victim of physical assault than any other form of personal violence – with between 2,000 and 2,500 incidents being reported to NSW Police each year.
- There has been no noticeable increase (or decrease) in violence of any kind towards older people over the past five years.

Personal Violence Incident (Not Domestic Violence) of Older Victim by Age Group 2001-2005





For Consideration

- Expected increase mobility/independence of older people may result in greater exposure to or risk of Personal Violence.
- There is a need to ensure there are appropriate safeguards to protect older people who are particularly vulnerable (eg with dementia or disabilities requiring full time care).