



Australian Government
Department of Health and Ageing

A New Strategy for Community Care

The Way Forward

November 2005



Part 1

The Way Forward

Phase I: The Beginning



A New Strategy for Community Care

The Way Forward



Consultation Process – Phase I

2002: Minister for Ageing called for review

2003: Release of *A New Strategy for Community Care*

Industry submissions/reports received

Reference Group appointed

Discussions with state and territory governments

2004: Release of *A New Strategy for Community Care –*

The Way Forward

A New Strategy for Community Care

The Way Forward



What's needed...

- A simpler, cost effective system with streamlined reporting and accounting requirements.
- Address service overlaps, gaps and duplication and improve accessibility.

A New Strategy for Community Care

The Way Forward



Common Arrangements for a simplified and consistent national system

1. Assessment for need and eligibility
2. Access to services
3. Eligibility criteria
4. A common approach to determining consumer fees
5. Accountability
6. Quality Assurance
7. Information management and data collection
8. Planning

The Way Forward

Phase II: The Way Forward



A New Strategy for Community Care

The Way Forward



The Way Forward....

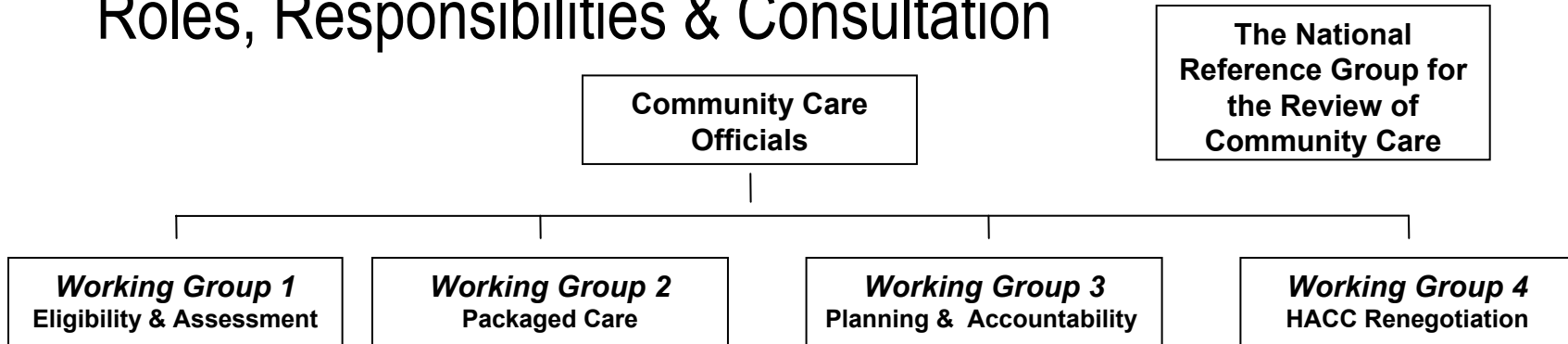
- The beginning of the second phase
- Research and Development
- Building on the strengths of the current community care system
- Field testing is next

A New Strategy for Community Care

The Way Forward



Roles, Responsibilities & Consultation

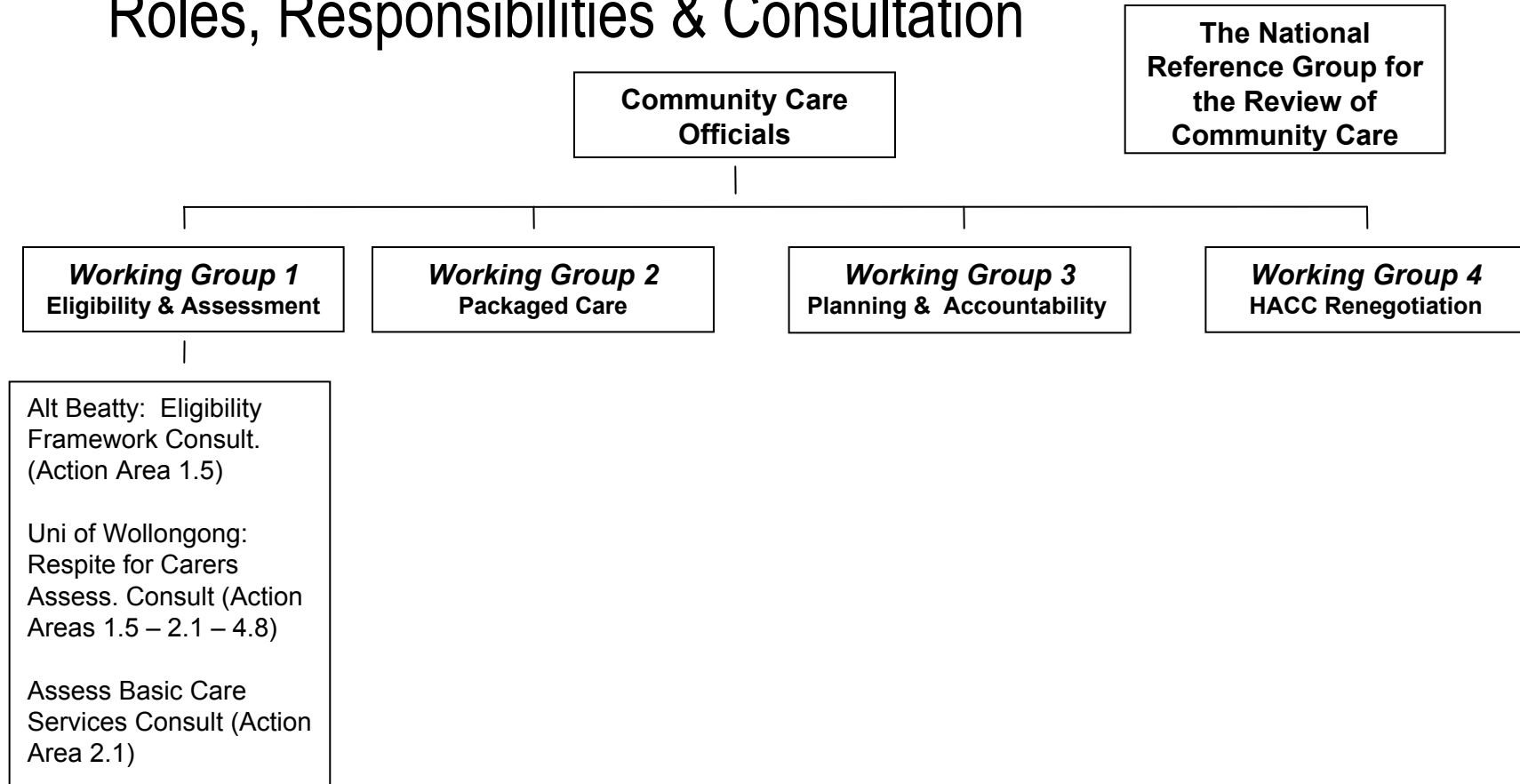


A New Strategy for Community Care

The Way Forward



Roles, Responsibilities & Consultation

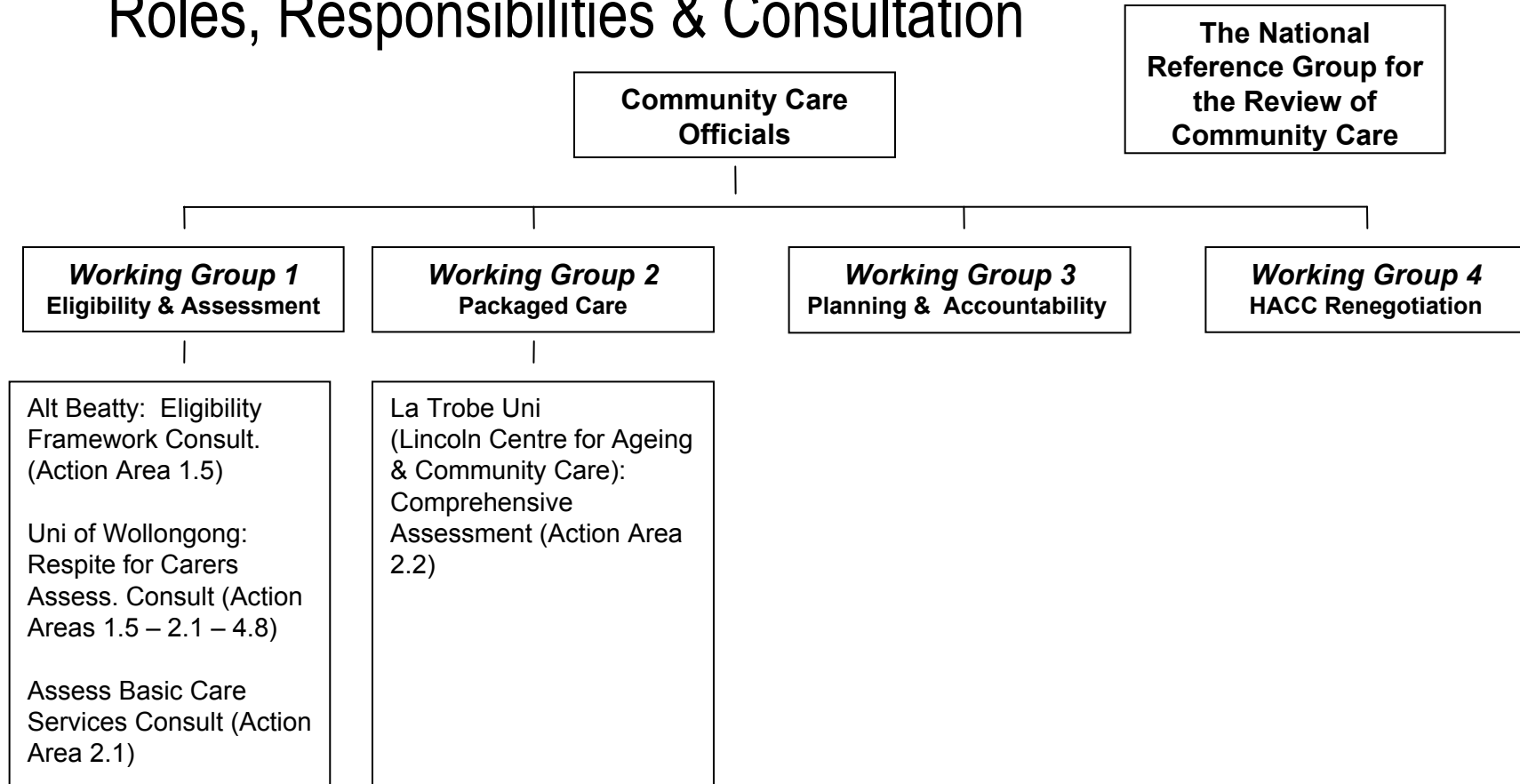


A New Strategy for Community Care

The Way Forward



Roles, Responsibilities & Consultation

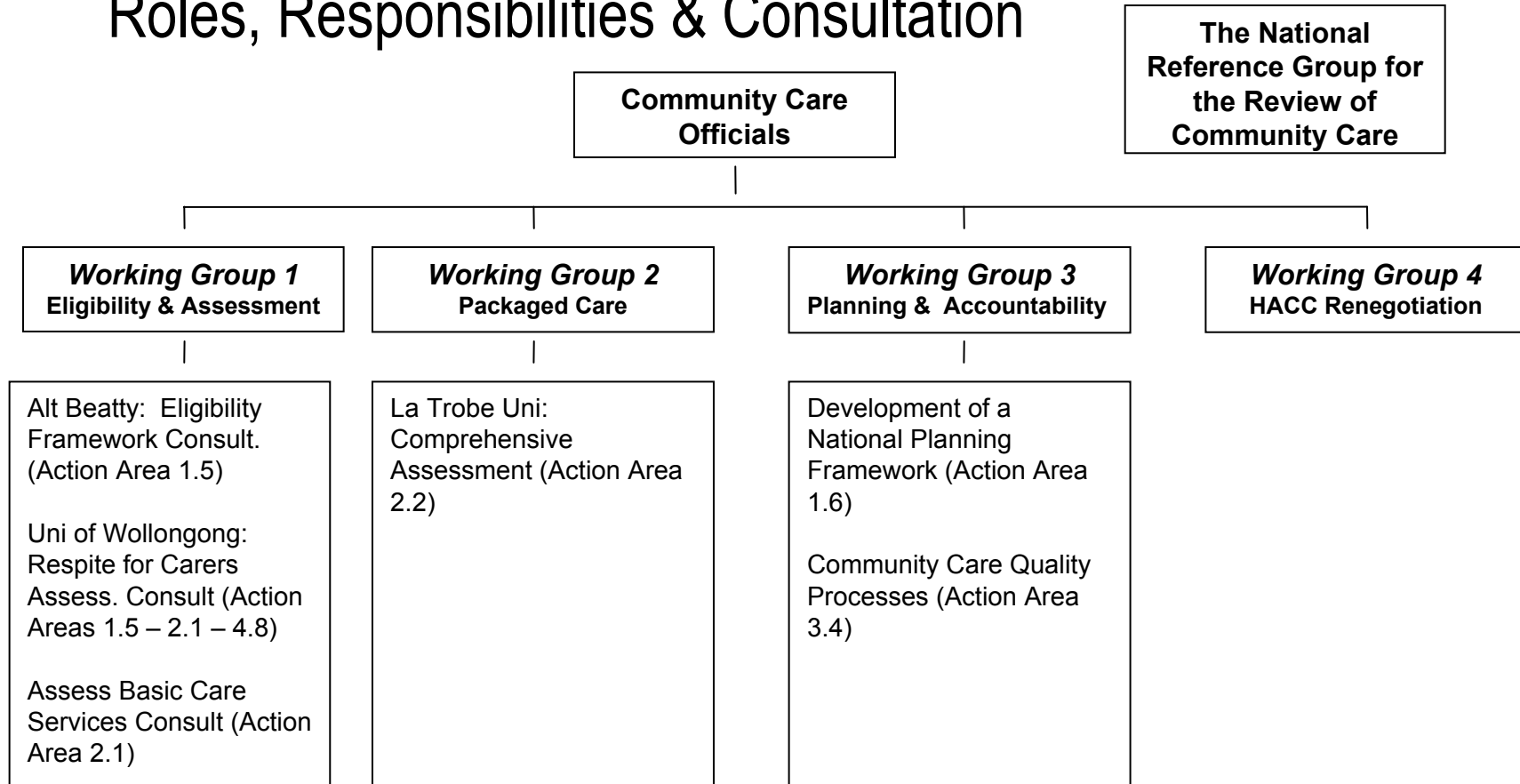


A New Strategy for Community Care

The Way Forward



Roles, Responsibilities & Consultation

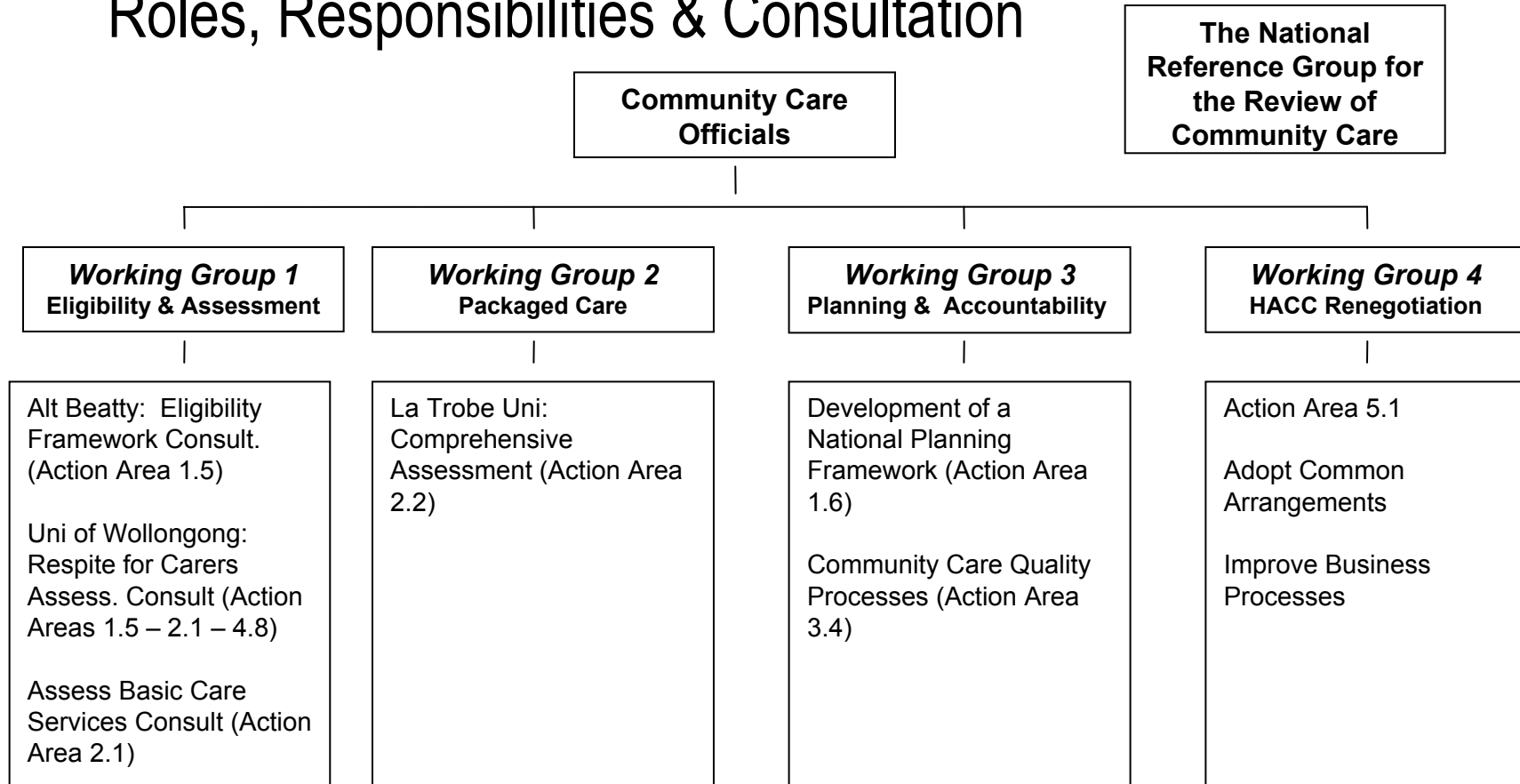


A New Strategy for Community Care

The Way Forward



Roles, Responsibilities & Consultation

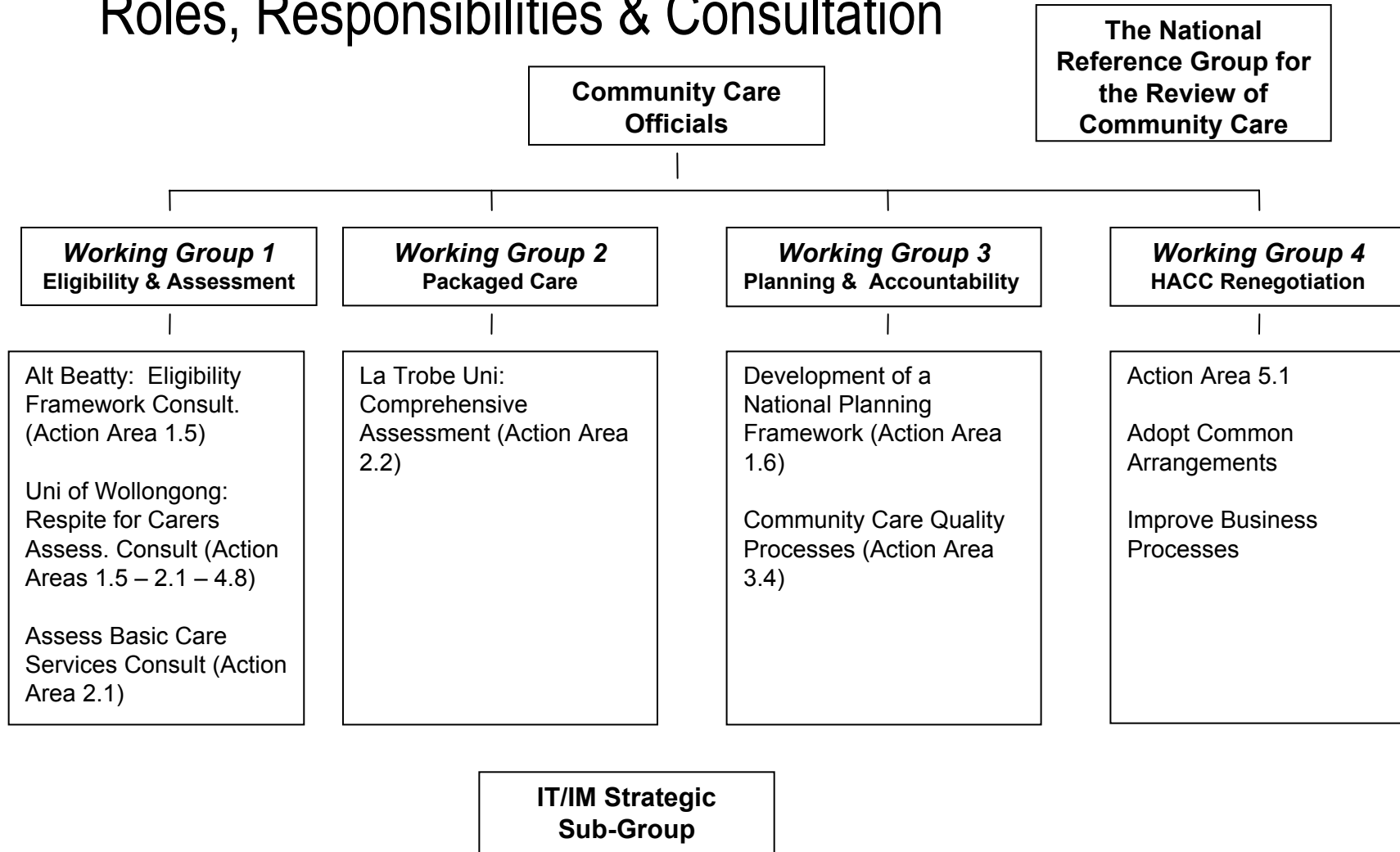


A New Strategy for Community Care

The Way Forward



Roles, Responsibilities & Consultation

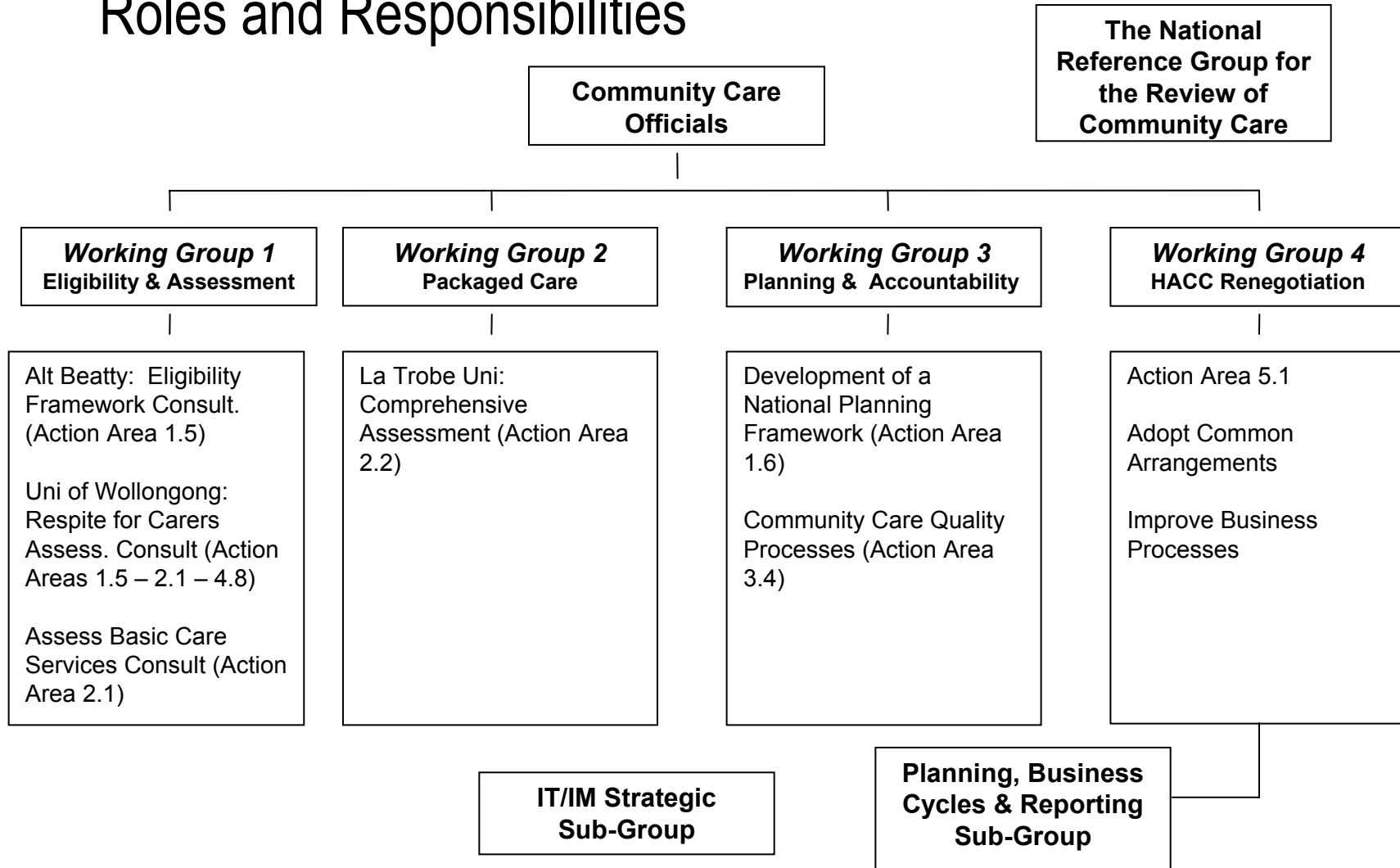


A New Strategy for Community Care

The Way Forward



Roles and Responsibilities



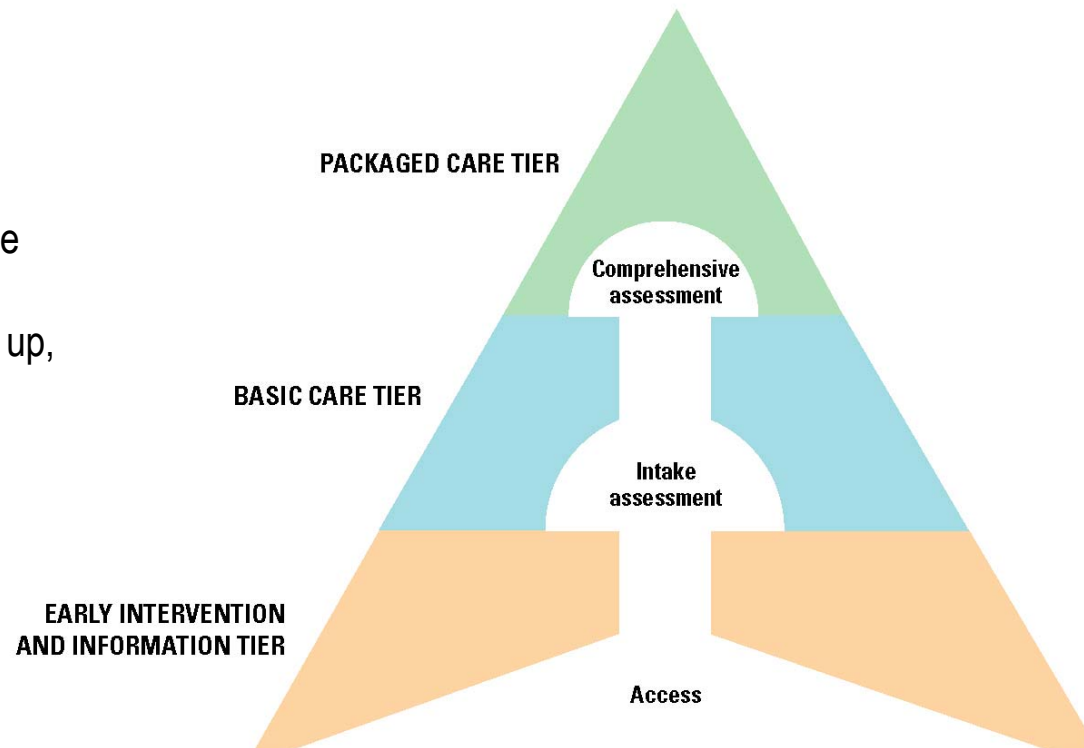
A New Strategy for Community Care

The Way Forward



A National Framework....

Note: Movement through the levels (tiers) of care is not necessarily from the bottom up, or in a sequential way.



A New Strategy for Community Care

The Way Forward



The Way Forward was produced in consultation with stakeholders. This collaborative approach will continue...

- Home
- Ministers
- For Consumers
 - Ageing
 - Education and Prevention
 - Conditions and Diseases
 - Health products and medicines
 - Healthcare systems
 - Health Workforce
 - Rural Health
 - Health Priorities
 - Services
 - Ethical Issues
 - Gene Technology
- For Health Professionals
- About Us
- Services
- Publications
- Media Centre
- Programs & Campaigns
- Research & Statistics
- Legislation & Policy

:: A New Strategy for Community Care - The Way Forward

A- A+

This section of the site contains information relating to the booklet '*A New Strategy for Community Care - The Way Forward*'

Background

Information about the *The Way Forward* and its development

Action Items

Provides a summary of Action Items outlined in the booklet '*A New Strategy for Community Care - The Way Forward*'

Media Centre

Links to publications and media related to '*A New Strategy for Community Care - The Way Forward*'

Research and Development

Key research and development work that is currently underway and will involve service provider and peak body participation over the coming months.

Whats New

The Way Forward - A Partnership Approach

A New Strategy for Community Care

The Way Forward



Phase III...

- Expected to commence in 2006-07.
- Implementation of common arrangements
- Continued consultation

A New Strategy for Community Care

The Way Forward



Questions...

