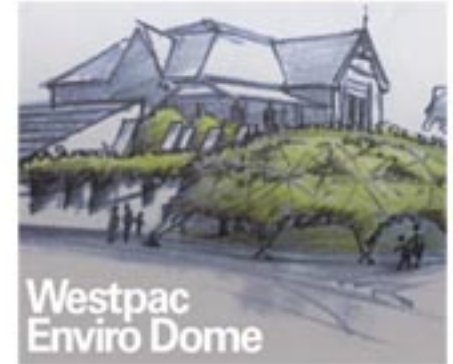




**HORTICULTURAL THERAPY
SOUTH AUSTRALIA**



ADELAIDE ZOO GUIDED TOUR



Join **HTSA** on this fascinating guided tour through the rapidly developing Adelaide Zoo.

Guided by Sharon Mackay, Leading Hassell Landscape Architect on the Zoo redevelopment, and Jeff Lugg, Adelaide Zoo's Head Horticulturalist.

A bumper tour taking us through the Adelaide Zoo's newest developments
Immersion - South East Asian Rainforest
an intriguing multi-species exhibit,
The Westpac Envirodome Education Centre, under construction,
and the exciting
Giant Panda Exhibit and New Entry Precinct.

SUNDAY SEPTEMBER 28TH at 11am

Meet at Botanic Park service gates entrance

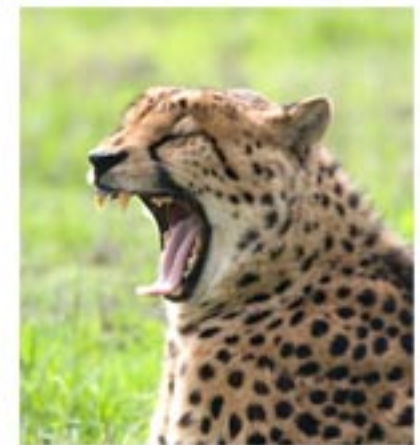


Cost

HTSA members \$10
Non-members \$20
(includes Zoo entry and guided tour)

RSVP

Glenda Williams HTSA Secretary
Ph 8339 2229 or 0409 186 339
glenda@senet.com.au



For more info on the Zoo developments
<http://www.adelaidezoo.com.au/major-projects>